

ENRICHING LOCAL CURRICULUM

Through Education Programmes

2024 - B



ROTORUA
museum

Te Whare Taonga o Te Arawa
ART | CULTURE | HERITAGE

KIA ORA WELCOME

Included in this booklet is information pertaining to our programmes on offer to schools

We ask you to peruse this booklet and identify how our programmes can complement your students' learning. We are open to customising our programmes to align with your learning objectives.

We are pleased to announce that Taupopoki George McLeod (Ngāti Whakaue, Tūhourangi-Ngāti Wāhiao, Tapuika, Ngaiterangi) has been appointed to the role of Kaiurungi Mātauranga o Te Whare Taonga o Te Arawa – Rotorua Museum Education Lead. George has been with the Museum team for over 20 years, and most of that has been in the Education Team, with the last 10 months acting in the Education Lead role.

George has taught generations of tamariki and rangatahi and is well known amongst the local education community. His teaching and wider education experience, curriculum knowledge, extensive networks and relationships, together with the great job he has done as the acting lead, made him a great contender for the role.

For information on booking please see the last page of this booklet.

Ngā manaakitanga

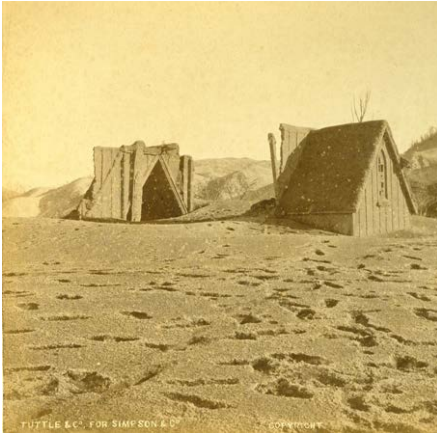
Rotorua Museum Education Team



Left to Right: Rebecca Moore, Taupopoki George McLeod, and Kristina Joyce



TARAWERA EXTREME NATURAL EVENTS



Level: Secondary

Subjects: Geography - NCEA Level 1

Duration: 1.5 Hours
Up to 30 students per session

Venue: Te Rūnanga Tea House

Supports achievement standard 91007

Students will be given an introductory talk about extreme natural events, focusing specifically on the 1886 Mt Tarawera eruption and the Rotorua landscape.

This will summarise the processes that produce volcanic eruptions, the sequence of events that occurred during the Tarawera eruption and how the environment was changed as a result.

Staff will talk about the effects the eruption had on people and the environment, both short and long term, and what may happen to the mountain in the future.

Students will then partake in hands-on and inquiry based activities involving rocks and historic images from the Museum collection.

EIGHTEEN TWENTY THREE WARFARE FROM THE NORTH



Level: Secondary

Subjects: History - NCEA Level 1

Duration: 1.5 Hours
Up to 30 students per session

Venue: Rotorua Library, Te Aka Mauri

Using a range of hands-on, minds-on activities (including maps, objects and taonga) students will explore the factors which caused the invasion of Mokoia Island in 1823.

What happened during that event and what were the consequences afterwards for both Te Arawa and Ngāpuhi?

Students will examine not only the past but how this event is perceived by both iwi today.

This programme is delivered by our educator Taupopoki George McLeod (Ngāti Whakaue, Tūhourangi) and is a valuable resource when wanting to understand the events that occurred.

TOURISM DEVELOPMENT IN ROTORUA



Level: Secondary

Subjects: Geography - NCEA Level 3

Duration: 1.5 Hours
Up to 30 students per session

Venue: Te Rūnanga Tea House

Supports achievement standard 91427 A Cultural Process – Tourism Development

Students will receive an interactive, relevant and engaging talk while learning about tourism development.

This will summarise the birth of tourism at the Pink and White Terraces and the effects of the Mt Tarawera eruption. It will cover the diversification and advancement of the township and the attempts at catalytic development by the Government.

The talk will also explore the mass development phase and specialisation of tourism in recent years.

Staff will highlight the impact that social, political, economic, natural and technological elements have on the environment of Rotorua. This also includes the short term impacts of COVID-19.

DISCOVERING AOTEAROA



Level: Junior (primary), Middle (primary)
Senior (primary), Intermediate,
Secondary

Subjects: Social Science – Aotearoa
History Curriculum

Duration: 1.5 - 2 Hours
Up to 30 students per session

Venue: Rotorua Library, Te Aka Mauri

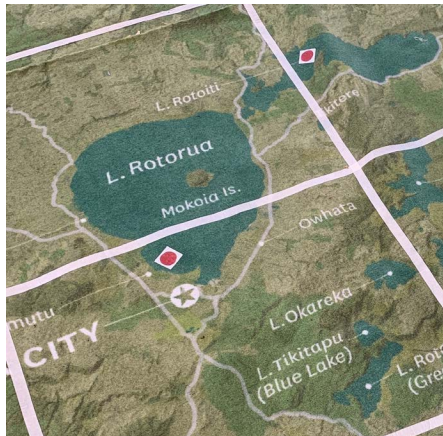
How did early Te Arawa tūpuna (ancestors) like Tamatekapua and Ngātoroirangi find their way across the Pacific Ocean to a new land?

Students will find out about the skills required not only to journey to Aotearoa, but how numerous trips were made back and forth from Hawaiiiki.

This programme looks at why early explorers came to Aotearoa, the events that happened when they arrived and why they stayed.

A great programme to teach the big idea Māori history is the foundational and continuous history of Aotearoa New Zealand.

NGĀ HAERENGA O TE ARAWA NGĀ KŌRERO O TE KURA TE ARAWA JOURNEYS



Level: Junior (primary), Middle (primary)
Senior (primary), Intermediate,
Secondary

Duration: 1 - 2 Hours
Up to 30 students per session

Venue: Rotorua Library, Te Aka Mauri



Level: Middle (primary), Senior
(primary) Intermediate, Secondary

Subjects: Social Science - Aotearoa
History Curriculum

Duration: 1.5 Hours
Up to 30 students per session

Venue: Te Rūnanga Tea House

Step back in time to rediscover one well known Te Arawa journey. Examine the difference between a holiday and a journey. Explore with hands-on items what was required to survive on a journey long ago.

Then have a go at creating unplugged coding instructions to replicate how the chosen journey progressed.

Teachers choose one of the following journeys to focus on:

- 1 Ihenga and the Discovery of Rotoiti/Rotorua
- 2 Ngātoroirangi and the Coming of Fire
- 3 Hatupatu and Kurungaituku (Birdwoman)
- 4 Tamatekapua and the Voyage from Hawaiiki

Talk to us if you have other journeys in mind.

What's your school story?

Uncover the unique history of the area your school is situated in.

Explore with the museum education team using treasures, landmarks, maps, objects, and photographs. Discover what happened in the past and who were the people or events that contributed to change

**Minimum of two or three classes required.
Must book 6 - 8 weeks prior.**

EARLY TE ARAWA GAMES



Level: Junior (primary), Middle (primary) Senior (primary), Intermediate, Secondary

Subjects: Social Science – Aotearoa History Curriculum

Duration: 1.5 Hours
Up to 30 students per session

Venue: Te Rūnanga Tea House

Resource Fee: \$3 per student

Have fun playing traditional games and trying toys enjoyed by early Māori children in Aotearoa.

Students will compare games and toys of the past to those used today.

They will decorate their own pūrerehua (bullroarer) to take home afterwards.

This programme is perfect for junior and middle school primary students with a high level of hands-on engagement.

TE PAEPAEHAKUMANU THE GOVERNMENT GARDENS



Level: Junior (primary), Middle (primary) Senior (primary), Intermediate, Secondary

Subjects: Social Science – Aotearoa History Curriculum

Duration: 1.5 Hours
Up to 30 students per session

Venue: Te Rūnanga Tea House

Students will be outside and work as a team to solve clues, sketch, research, and record answers. Then they will report back with findings to show that Te Paepaehakumanu (the Government Gardens) is a significant historical site and today is home to a variety of Te Arawa stories, memorials, buildings, natural features and sculptures special to Rotorua.

This includes trying small amounts of geothermal mud on their skin.

Weather dependant.

**iPads or tablets for photography required.
Enquire at time of booking.**

AMAZING RACE



Level: Junior (primary), Middle (primary)
Senior (primary), Intermediate,
Secondary

Subjects: Social Science – Aotearoa
History Curriculum

Duration: 1.5 Hours
Up to 30 students per session

Venue: Te Rūnanga Tea House

Government Gardens is not just a pretty place to go for a walk!

Uncover the mysteries of this special historic place, race against others in an Amazing Race to find clues, meet Rangitihī a renowned Te Arawa tupuna (ancestor) and Queen Victoria along the way.

PIONEER DAYS



Level: Junior (primary), Middle (primary)
Senior (primary), Intermediate,
Secondary

Subjects: Social Science – Aotearoa
History Curriculum

Duration: 2 Hours
Up to 30 students per session

Venue: Rotorua Steam and Settlers
Museum

Rotorua Museum, in conjunction with the Rotorua Steam and Settlers Museum, are pleased to offer this hands-on programme for students.

Investigate what everyday life was like in the late 1880s to early 1900s. Students will experience the homes, shops and chores common to the time.

Objects and technologies from the period will be used to make butter, do the washing and play early pioneer games.

Special conditions and fees apply.

Cost: \$5 per student, adults and teachers free of charge

Payment is to be made at the Steam and Settlers Museum on the day.

ANZAC DAY



Level: Middle (primary)

Subjects: Social Science – Aotearoa History Curriculum

Duration: 1.5 Hours
Up to 30 students per session

Venue: Rotorua Library, Te Aka Mauri

World War One presented in an easy way for your students to understand.

How did one seemingly small incident start a chain of events that lead to one of the largest conflicts in world history?

Why this event was called the Great War? How did it bring about national pride and independence in Aotearoa New Zealand?

In this programme students will explore the stories of soldiers and objects from the museum collection.

They will gain an understanding of what was going on in the world at that time and how New Zealand became involved in this global event.

AKE! AKE! 28 MĀORI BATTALION



Level: Middle (primary), Senior (primary)

Subjects: Social Science – Aotearoa History Curriculum

Duration: 1.5 Hours
Up to 30 students per session

Venue: Rotorua Library, Te Aka Mauri

Students will investigate who the 28 Māori Battalion were.

They will come to understand where they came from, where they went and what happened to them during World War Two.

This programme includes critically examining images of the time as well as hands-on activities looking at objects similar to those used by soldiers.

TARAWERA LEGACY



Level: Junior (primary), Middle (primary)
Senior (primary), Intermediate,
Secondary

Subjects: Social Science – Aotearoa
History Curriculum

Duration: 1.5 Hours
Up to 60 students per session

Venue: Te Rūnanga Tea House

The 1886 Mt Tarawera eruption can be explored in depth by visiting three Rotorua attractions.

Students will visit sites relevant to the eruption. Te Wairoa was the main village near Mt Tarawera during the eruption. Today it survives in a new form as the Buried Village.

The Whakarewarewa Living Māori Village is where many survivors of the eruption rebuilt their lives and families.

This package is completed with a curriculum linked programme delivered by a Rotorua Museum educator.

Prices available on application or see our website for more information:

 rotoruamuseum.co.nz/learning

TARAWERA TE MAUNGA TAPU



Level: Junior (primary), Middle (primary)
Senior (primary), Intermediate,
Secondary

Subjects: Social Science – Aotearoa
History Curriculum, Science

Duration: 1.5 Hours
Up to 60 students per session

Venue: Te Rūnanga Tea House

Using museum collection items, film and photographs, students will identify why we have volcanoes such as Tarawera in our region and how tourism developed at Te Wairoa in the early 1880s.

They will explore how the 1886 eruption affected the lives of people, changed the landscape and look at how to predict the likelihood of future eruptions.

Please let us know your specific learning outcomes so we can adapt our programme to suit.

MIXED MEDIA FUN



Level: Junior (primary), Middle (primary)
Senior (primary), Intermediate

Subjects: Visual Art

Duration: 2 Hours
Up to 30 students per session

Venue: Rotorua Library, Te Aka Mauri

Resource Fee: \$3 per student

What makes the work of Māori artists stand out from other artworks?

Students will explore works made by Rotorua artists. The artists will include not only painters but those working in media such as whakairo (carving), and raranga (weaving).

Following in the footsteps of these contemporary artists, students will be involved in the process of creating their own innovative and meaningful artwork.

Students will consider how Māori art often shows:

- Mātauranga Māori (Māori knowledge)
- Balance with, not dominance over, nature
- Māori are tangata whenua (people of the land)
- Importance of tūpuna (ancestors)

LAND OF THE TANIWHA



Level: Junior (primary), Middle (primary)
Senior (primary), Intermediate

Subjects: Visual Art, Social Science -
Aotearoa History Curriculum

Duration: 2 Hours
Up to 30 students per session

Venue: Rotorua Library, Te Aka Mauri

Resource Fee: \$3 per student

Where can we find the taniwha who reside in and near Rotorua? Students will listen to stories of taniwha special to their area and locate their dwelling places in relation to their kura (school).

Students will consider why taniwha are there and how knowledge of their presence was important to people in the past and is still relevant today.

They will investigate what taniwha look like and present their findings through practical artwork.

NB: We can adapt this programme to suit the area in which your school is situated.

INSPIRE TO WRITE



Level: Middle (primary) Senior (primary), Intermediate, Secondary

Subjects: Visual Art

Duration: 2 Hours
Up to 30 students per session

Venue: Sulphur Lake
Government Gardens

Ignite the catalyst for writing through an engaging visual arts experience.

Using sculptures create connections between oral, written, and visual language in this fun filled programme.

Students will return to school with a repertoire of experiences to take further and to engage young writers.

EXPLORING GEOTHERMAL ENVIRONMENTS



Level: Junior (primary), Middle (primary) Senior (primary), Intermediate, Secondary

Subjects: Science

Duration: 2 Hours
Up to 30 students per session

Venue: Te Runanga Tea House

Be a scientist and discover how geothermal activity is produced and why it occurs in the Rotorua region.

This hands-on session will have children observing, testing, recording, comparing and analysing geothermal activity in and around Sulphur Point and the Government Gardens.

NB: This programme is weather dependent

DO YOU SEE WHAT I SEE



Level: Junior (primary), Middle (primary)
Senior (primary), Intermediate,
Secondary

Subjects: Science, Visual Art

Duration: 2 Hours
Up to 30 students per session

Venue: Rotorua Library, Te Aka Mauri

Find hidden secrets all around us by taking time to really notice and observe. In this discovery programme students will be both scientists and artists.

They will learn to take time and listen to the ideas of others when observing objects.

They will have the opportunity to extend on initial discoveries by working collaboratively and using techniques such as printing/ rubbing, labelling and using magnifying glasses.

I LIVE IN A CALDERA



Level: Junior (primary), Middle (primary)
Senior (primary), Intermediate,
Secondary

Subjects: Science, Visual Art

Duration: 2 Hours
Up to 30 students per session

Venue: Te Rūnanga Tea House

This sustainability programme opens students' eyes to Rotorua's natural treasures and environment.

Students will learn that their school sits in a caldera and that within that caldera is also our beautiful lake, Rotorua nui a Kahumatamomoe.

We will look at how the lake water is tested and what could be done to improve the lake quality.



MAKING A BOOKING

Cost: It is **FREE** for Rotorua Schools to attend these education programmes. Some programmes may have a small resource cost.

Booking Times: Bookings for schools are essential. Please book 8-10 weeks prior to confirm your visit. Also make sure you book your bus at the same time as bus funding is limited.

Session Times: 1-2 hours (enquire at time of booking)

Book: Fill in the online form:
🌐 rotoruamuseum.co.nz/education

Supplied: Upon email confirmation of booking we supply the following:

- Lesson outline
- RAMS
- Handy hints
- Pre and post-visit resources
- Planning focus sheets to tailor lessons
- All resources needed for undertaking one of our programmes

PROGRAMMES KINDLY SUPPORTED BY:



ROTORUANZ
EDUCATION NETWORK

The **ARTS** VILLAGE



Te Pū Tiaki Mana Taonga
Association of educators beyond the classroom



ROTORUA
LIBRARY
@ Te Aka Mauri



unison



ROTORUA
LAKES COUNCIL
Te Kaunihera o ngā Roto o Rotorua

FREE MUSEUM BUS

Thousands of Rotorua ākonga benefit each year from the generosity of the Ngati Whakaue Education Endowment Trust Board. The trust provide the free Museum bus in order for classes to attend our education programmes, removing one of the biggest barriers for school – the hassle and cost of transportation.

The trust have been one of our strongest supporters and we cannot thank them enough.





ROTORUA
museum

Te Whare Taonga o Te Arawa
ART | CULTURE | HERITAGE

ROTORUA
LAKES COUNCIL